

HOMEWORK ARRANGEMENTS:

A 20 min homework will be set each night from one of the following subjects:

Science
Humanities
Maths
English
French

Websites to support learning:

www.parentcentre.gov.uk
www.bbc.co.uk/schools/
www.homeworkelephant.co.uk/
www.ngfl.gov.uk
www.rif.org.uk
www.parentsonline.gov.uk
www.topmarks.co.uk
www.channel4.com/homework/
www.booktrust.org.uk

HOMEWORK GUIDELINES:

The precise amount of time spent on homework is much less important than the quality of tasks set and the way they are planned to support learning. However, the following is given as a guide when completing homework tasks.

Reception	10 mins per day Sharing and reading books with an adult
Years 1 & 2	10 mins per day Literacy work to include reading & spelling Numeracy to include number based activities
Years 3 & 4	10 – 15 mins per day Literacy & numeracy with assignments in other subjects
Years 5 & 6	20 - 30 mins per day Weekly schedule with emphasis on literacy & numeracy

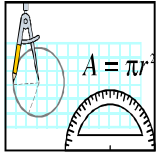
Literacy – reading practice and listening to others forms an essential part of learning throughout the Primary years. Reading should form the basis of all homework time and should range between 10 mins in Pre Prep and extending to 20 mins per day in Prep. Other literacy work will include practising spellings and punctuation.

Numeracy – number games & tasks, learning times tables alongside more challenging activities set for Prep pupils.

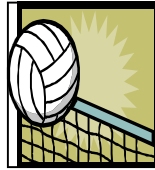


Topics for the Summer Term 2010

Prep Dept:
Form 3

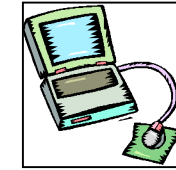


Place value - estimation/
 rounding
 Division (of money,
 remainders)
 Long multiplication
 Fractions, decimals and
 percentages
 Ratio, proportion
 Handling data
 Problem solving in real
 life context
 Angles-draw and
 measure
 Measures-time
 Revision of + and - (inc.
 decimals)

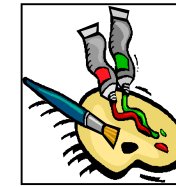


PE: Athletics and
 swimming

 Games: Cricket (boys)
 Rounders (girls)



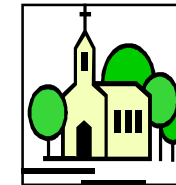
Key fob for locker key
 Working with words



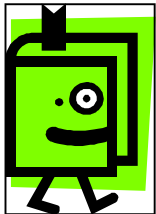
Creating picture stories
 Observational drawing
 Pictorial composition



Tackling real life
 situations through mime
 and using our emotions
 and feelings



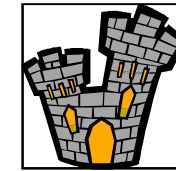
Religious journeys and
 Muslims and their
 beliefs



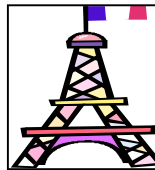
Film narrative
 Persuasive writing
 Dramatic conventions
 Choral poetry
 Grammar and spelling
 revision



Buchan Music Festival/
 Guild



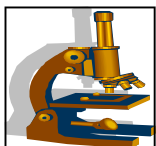
Victorians - Farming
 and life in the
 countryside
 Visit to Cregneash
 village and the Grove
 museum



Food and eating out
 on holiday



Rivers at work
 Visit to Glen Maye



More about dissolving
 Reversible and
 irreversible changes



Manmade patterns from
 nature
 Design and make a wind
 racer



Emergency first aid
 Emotions and feelings